



星檳旅遊有限公司  
Sin-Pen Travel Sdn Bhd

(155399-A)

✉ : 113-A, Macalister Road, 10400 Georgetown,  
Penang, Malaysia.  
☎ : +604-226 6161 ☎ : +604-228 6161  
✉ : tour@sinpen.com



www.sinpen.com

Towards Iso 9001 : 2008 Quality Mangement.....

5天4夜

## 清迈/清莱(过夜)+ 大象训练营(骑象+牛车+竹筏)



Tour Code: TCJ



★风味餐: • 帝王餐含泰式歌舞表演

### 精简行程:

#### 第一天 抵达清迈

(机上用餐/午/晚餐)

- 素贴山皇家佛寺

#### 第二天 清迈 (早/午/晚餐)

- 大象训练营
- 兰花蝴蝶园

#### 第三天 清迈/清莱

(早/午/晚餐)

- 温泉地带
- 白庙
- 黄金三角洲
- 马赛边界

#### 第四天 清莱/清迈

(早/午/晚餐)

- 家庭工业手工艺村

#### 第五天 清迈-回程

(机上用餐/早餐)

### 观光景点:



素贴山皇家佛寺



大象野生动物园



白庙

### 清迈

- 双龙寺-参观双龙寺, 清迈的最重要和最明显的地标, 俯瞰城市森林山为背景。走近寺庙是徒步攀登陡峭的楼梯comprinsinf的290步骤。寺庙的金色宝塔包含一个神圣的佛舍利, 并吸引了来自世界各地一年四季佛教香客。
- 大象野生动物园 - 你可近距离触摸小象, 了解大象的生活, 观赏大象表演, 大象冲凉, 大象画画, 还有骑大象, 坐牛车及乘竹筏欣赏自然风景。在这里可观赏到如何训练大象, 并观看到大象的精彩表演, 亦可坐在背上装有木椅的大象, 牛车, 竹筏, 骑乘时有专业工作人员随行。
- 兰花蝴蝶园 - 展出花朵的所有品种, 形状及颜色价格从数株至数十万, 为罕见的外来物种。
- 体验皇帝餐含表演-享受一个晚上Khantoke的晚餐, 泰国北部的风格, 习惯, 吃的食品虽然选择不多但可是无限供应, 而你坐在垫子上, 在地板上的大拼盘。一边用餐一边让自己沉淀在北部的文化表演, 包括迷人丰LEP (泰国手指舞), 拉姆, DAB (泰国剑舞) 丰 (泰国蜡烛舞Thiean), 和拉姆黄 (群舞选择)。
- 家庭手工业区-集中所有清迈的文化成就, 没有比他们的手工艺品更加显着。清迈是泰国的主要中心, 闻名优质手工艺品。工匠产生可变当中的首选购物, 银器, 漆器, 丝绸和棉制品, 陶瓷, 纸伞 (自费: 游客可以随意自备或购买T-Shirt给画家画上美丽的图案), 和珠宝品质的产品。

### 清莱

- 白庙 - 寺庙的设计者是泰国的视觉艺术家及画家Chalermchai Kosipipat, 因其独特的白色设计主题, 白色玻璃材料, 奇特的设计元素而闻名。
- 黄金三角洲 - 是泰国、寮国与缅甸三国的边界, 划分了三个国家的土地, 原来这一带是生产毒品的基地, 如今已成为旅游胜地 (游客可自费选择坐游船金三角到对岸寮国参观)。
- 马赛 - 是泰国最北的泰缅交界小城市, 在泰缅交界的大街两旁, 摆满各式各样出售两国的纪念品, 有众多的旅游商店



黄金三角洲



皇帝风味餐含歌舞表演



马赛

行程次序, 以当地旅社安排为准。

自费项目: • 乘船游老挝 [THB 500/每人] / 长颈村 [THB 600/每人] / 入境缅甸 [THB 1300/每人]

出发日期:

航班行程:

	团费	机场税及 燃油附加费	小费	旅行社 代收费用	签证	旅行 保险	总数
成人							
小孩							

Travel Agent:



星檳旅遊有限公司  
Sin-Pen Travel Sdn Bhd (155399-A)

✉ : 113-A, Macalister Road, 10400 Georgetown,  
Penang, Malaysia.  
☎ : +604-226 6161 📠 : +604-228 6161  
✉ : tour@sinpen.com



www.sinpen.com

Towards Iso 9001 : 2008 Quality Mangement.....

5D4N

## CHIANGMAI/CHIANGRAI (Overnight) + ELEPHANT SAFARI (Elephant Ride + Oxcartride + Bamboo Rafting)



Tour Code: TCJ



★ Special Cuisine : •Khantoke with Thai Dancing Shows

### Schedule:

#### D1 ARRIVAL CHIANGMAI (MOB/L/D)

- Doi Suthep Temple

#### D2 CHIANGMAI (B/L/D)

- Elephant Safari
- Orchid Butterfly Farm

#### D3 CHIANGMAI/ CHIANGRAI (B/L/D)

- Mae Kajan Hot Spring
- White Temple
- Golden Triangle Region
- Mae Sai

#### D4 CHIANGRAI/ CHIANGMAI (B/L/D)

- San Kham Phang Village (Home Industries)

#### D5 CHIANGMAI- DEPARTURE (B/MOB)

### Tourist Attractions:



Doi Suthep Temple



Elephant Safari



White Temple

#### CHIANGMAI

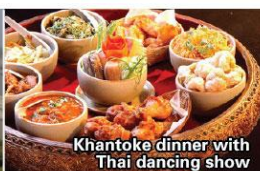
- **Doi Suthep Temple** - There are about 300 steps to climb. The reward is more than worth the effort. You will see a beautiful Buddhist Temple and you will experience a beautiful view. While climbing the stairs, you should pay attention to the giant dragons on the sides of the stairs (they appear already downstairs; see the right hand side picture).
- **Elephant Safari** - enjoy a elephant show, you can also experience elephant ride, ox cart, and bamboo rafting with professional guide.
- **Orchid Butterfly Farm** - On display are a profusion of blooms of all varieties, shapes, colours and prices from a few baht for the common trains to a few hundred thousand for the rare and exotic species.
- **KHANTOKE DINNER** - Enjoy an evening out by having a Khantoke Dinner, the customary northern Thai style of eating with food being served in large platters at low tables while you sit on mats on the floor. As you enjoy your meal, let yourself be entertained by a selection of northern cultural performances including the charming Fon Lep (Thai Finger Dance), Ram Dab (Thai Sword Dance), Fon Thiean (Thai Candle Dance), and Ram Wong (Group Dance).
- **SAN KHAM PHANG VILLAGE(HOME INDUSTRIES)** - Of all Chiang Mai's cultural achievements, none are more remarkable than their handicrafts. Chiang Mai is, quite simply, Thailand's major center for quality handicrafts. The artisans produce an extraordinary range of quality products which are in variably the first choice among shoppers, silverware, lacquerware, silk and cotton products, ceramics, parasols and jewelry.

#### CHIANGRAI

- **White Temple** - Is different from any other temple in Thailand, designed in white color with some use of white glass.
- **Golden Triangle Region** - At the intersection between the Mekong River and Kong River, The gate of the borders in Thailand Burma and Laos.
- **Mae Sai** - The northernmost town in Thailand it's separated from Burma only by a Bridge. There are many shops selling an assortment of Myanmar shores and souvenirs.



Golden Triangle Region



Khantoke dinner with Thai dancing show



Mae Sai

Sequences of Itinerary are subject to local arrangement.

Optional Tour: Boat Trip to Laos [THB500] / Long Neck Village [THB 600] / Myanmar Border [THB1300]

Departure Date:

Flight :

	Tour Fare	Airport Tax & Fuel Surcharge	Tipping	ACF	Visa
Adult					
Child					

Travel Agent: